

CD Product Sheet

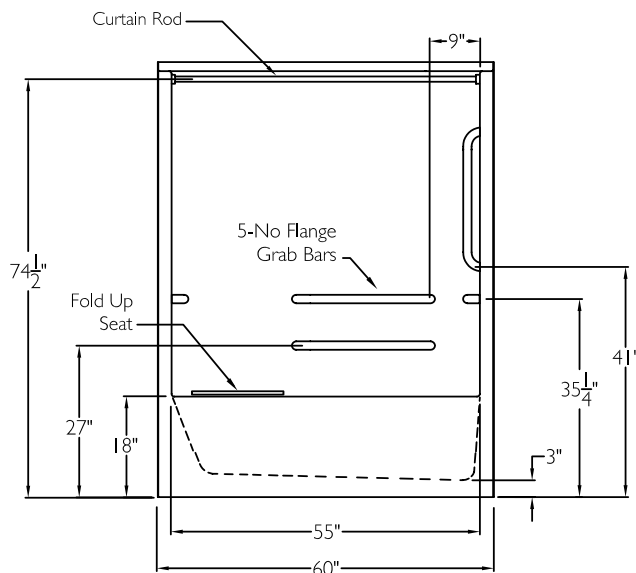
COMMERCIAL CODE COMPLIANT

XSS6092TS

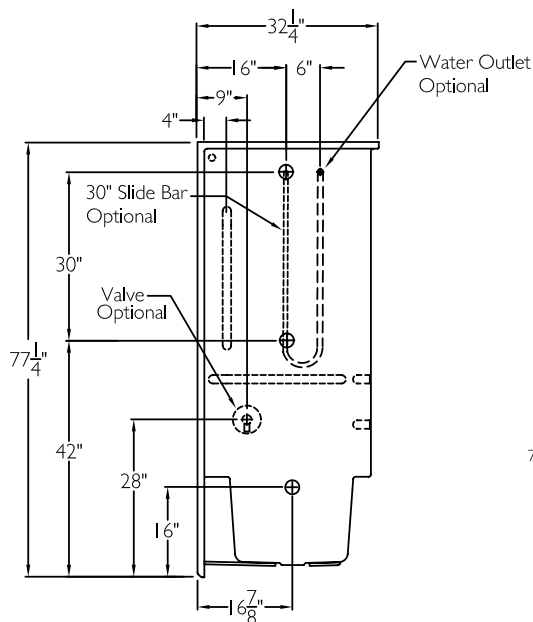
ADA/ANSI code compliant

NOTE: For ADA/ANSI compliance, pressure balancing mixing valve, hand-held shower with slide bar, vacuum breaker and 60" hose must be installed per ADA/ANSI guidelines.

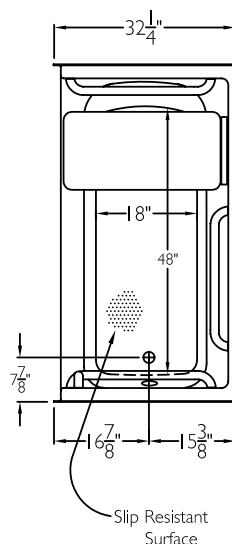
FRONT VIEW



SIDE VIEW



TOP VIEW

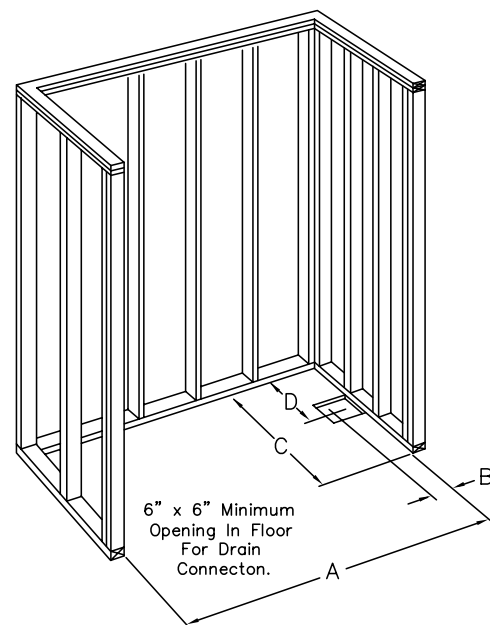


TECHNICAL INFORMATION

OD 60" x 32.25" x 77.5"

LOAD FACTOR 1.13

HANDED BY Valve Wall



FRAMING DIMENSIONS

A 60.25" B 7.825"

C 32.25" D 15.375"

ADDITIONAL CODES

ICC/ANSI I 7.1, ANSI I 24.2, ADAAG, BOCA, NAHBUPC, Southern Building Code

CODE COMPLIANT
Enhancing Livable Design

cd
comfortdesigns

comfortdesignsbathware.com | 800.443.7269