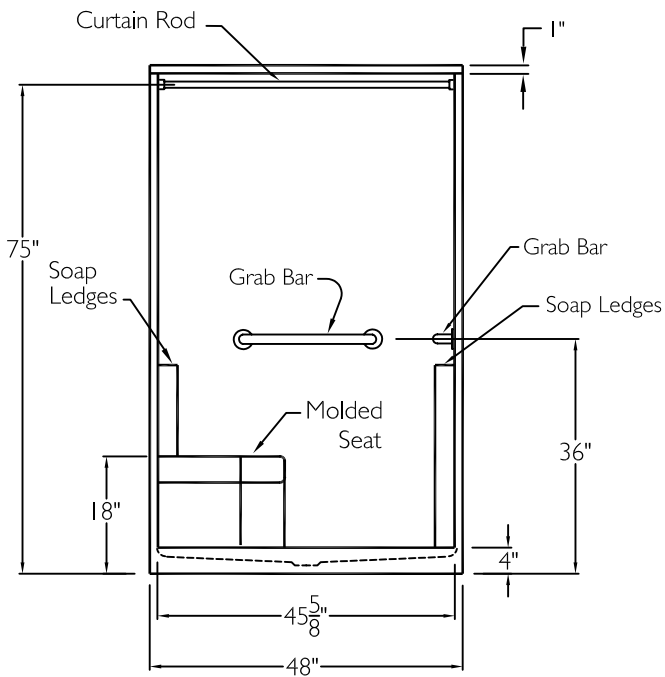
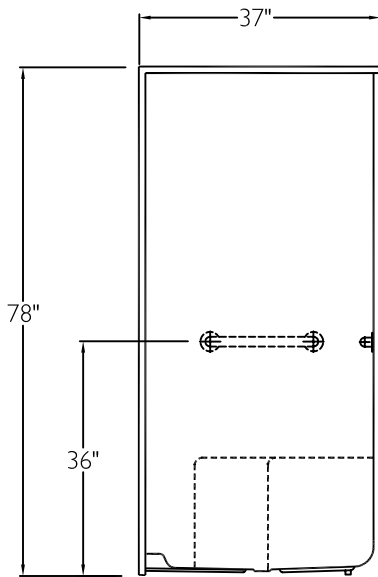


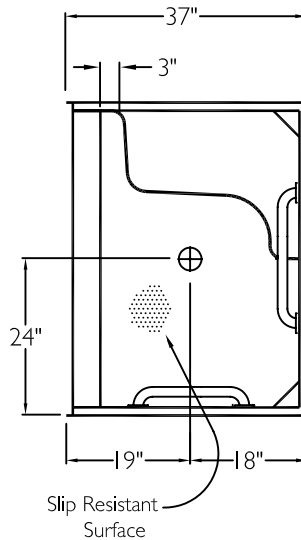
FRONT VIEW



SIDE VIEW



TOP VIEW



SUBMITTAL

This shower enclosure shall be model SSS 4837 SH IS right or left. Finished surface shall be of a sanitary grade solid surface exhibiting a minimal thickness of 55 dry mils and a finished cured Barcoal hardness of 80-90 as tested with ASTM D-2583. Unit construction shall be of a molded reinforced fiberglass with a 15% minimum fiberglass content.

The unit shall have outside dimensions of 48" x 37" x 78".

The unit shall meet ANSI Z124.1-2, BOCA, NAHB, UPC, CSA, and shall meet the requirements of the Southern Building Code.

The enclosure shall be equipped with the following accessories:

- 1) one 20" x 1 1/2" diameter 18 gauge stainless steel grab bar horizontal on the back wall,
- 2) one 16" x 1 1/2" diameter 18 gauge stainless steel grab bar horizontal on the valve wall,
- 3) one inch diameter, 18 gauge stainless steel curtain rod with receiver cups,
- 4) molded soap ledges in the corners,
- 5) large molded seat,
- 6) tri cell backing,
- 7) 4.0" threshold.

THIS UNIT FEATURES THE OUTSIDE DIMENSION OF 48" OF OVERALL WIDTH. THIS DOES NOT ALLOW FOR FULL ENCLOSURE OF THE BOLTS AND NUTS USED TO SECURE THE BARS AND SEAT IN PLACE. THE BOLT AND NUT COMBINATION SHOULD NOT PROTRUDE MORE THAN 3/4" ON EITHER SIDE OF THE SHOWER WALLS. THIS MAY REQUIRE THE NEED TO NOTCH STUDS TO ALLOW BOLT CLEARANCE FOR A DRYWALL ENCLOSED FIRE WALL INSTALLATION. ADJUSTMENT OF THE WALL BOARD MAY BE NECESSARY TO PROVIDE CLEARANCE OF THE BOLT(S) WHILE MAINTAINING THE INTEGRITY OF THE DRYWALL ENCLOSED FIRE WALL ENCLOSURE.

Job Name	Approved By	Name	Date	COMFORT DESIGNS	
Project No	Architect			Model No. SSS 6037 SH MS 4.0-I	
Comfort Designs 435 Industrial Road Savannah, TN 38372 tel 800.443.7269 fax 731.925.4290 www.comfortdesignsbathware.com	Engineer			Drawing No. SSS 6037 SH MS HBW HSW CR	
	Rep			Date Issued. 4-9-12	Drawing Rev.
	Wholesaler			Material. Solid Surface	
	Comments			Color.	
				Dimensions are in inches, Due to the nature of the materials dimensions may vary ± 1/2"	