

JS250DF

GE Appliances 30" Slide-In Electric Range

DIMENSIONS AND INSTALLATION INFORMATION (IN INCHES)

RECEPTACLE LOCATIONS: Locally approved flexible service cord or conduit must be used because terminals are not accessible after range installation. See shaded area in drawing for location of electrical outlet box. Recommended outlet locations allow range to be installed directly against rear wall.

NOTE: This appliance has been approved for 0" spacing to adjacent surfaces above the cooktop. However, a 6" minimum spacing to surfaces less than 15" above the cooktop and adjacent cabinet is recommended to reduce exposure to steam, grease splatter and heat.

INSTALLATION INFORMATION: Before installing, consult installation instructions for current dimensional data and additional requirements

REAR FILLER STRIP (INCLUDED)

WB07T10680 - Black Filler Strip Assembly

OPTIONAL KITS FOR SLIDE-IN ELECTRIC RANGES

(Available At Additional Cost)

ACCESSORY BACKGUARDS

(Attaches to the back of range as a backguard when unit is installed in 30" free-standing cutout)

JXS32SS (Stainless) - 4" High

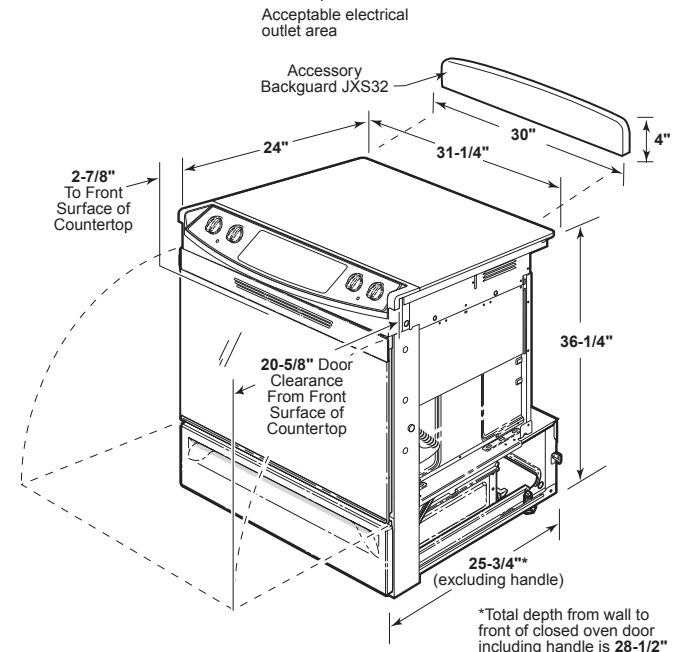
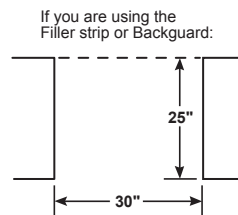
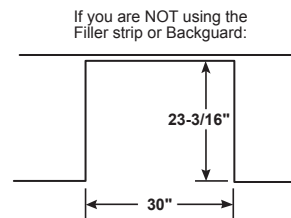
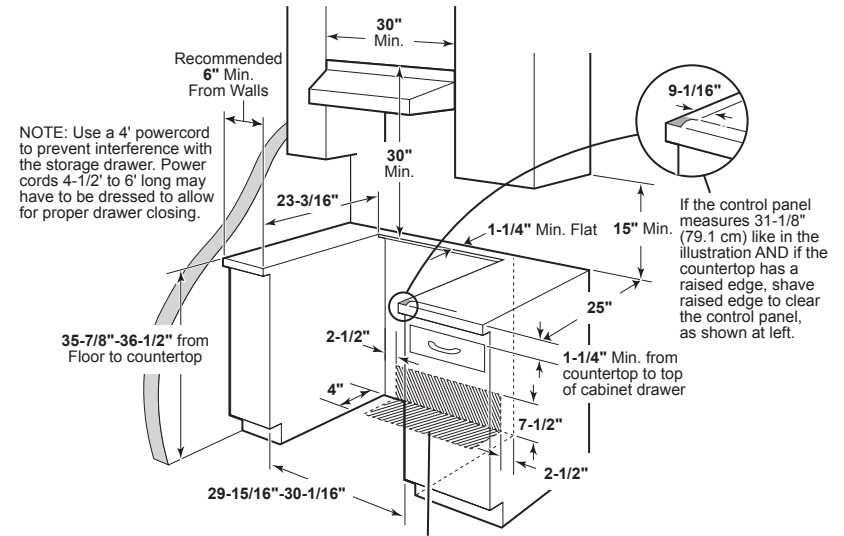
JXS32BB (Black) - 4" High

BODY SIDES

(Slide-in ranges are sold without sides installed. Can be installed on either left or right when unit has one exposed side [no cabinet adjacent]. Kit contains 1 body side) JXS77BB (Black)

KW RATING	
240V	11.9
208V	8.9
BREAKER SIZE	
240V	40 Amps [†]
208V	40 Amps [†]

†NOTE: Check local codes for required breaker size.



For answers to your Monogram, GE Café™ Series, GE Profile™ Series or GE Appliances product questions, visit our website at geappliances.com or call GE Answer Center® Service, 800.626.2000.



All GE ranges are equipped with an Anti-Tip device. The installation of this device is an important, required step in the installation of the range.



Listed by Underwriters Laboratories

Specification Revised 1/16

JS250DF

GE Appliances 30" Slide-In Electric Range

FEATURES AND BENEFITS

Self-Clean Oven - Cleans the oven cavity without the need for scrubbing

Coil Heating Elements - Provide even heat and easy cleanup

4.4 cu. ft. Oven Capacity - Enough room to cook an entire meal at once

Removable Full-Width Storage Drawer - Store cookware or kitchen accessories

Dual Element Bake - Upper and lower elements produce even heat and great results

Electronic Oven Controls - Electronic touch pads are easy to operate

Chrome Drip Bowls - Contain spills and remove for easy cleaning

Model JS250DFWW - White on white

Model JS250DFCC - Bisque on bisque

Model JS250DFBB - Black on black

