

# JP328SK

## GE 30" Built-In Electric Cooktop

### DIMENSIONS AND INSTALLATION INFORMATION (IN INCHES)

**IMPORTANT:** Maintain 5" (12.7 cm) minimum vertical clearance between the cooktop bottom and any combustible surfaces. Clearance not required when installing wall oven underneath. Units are furnished with a 48" flexible armored cable.

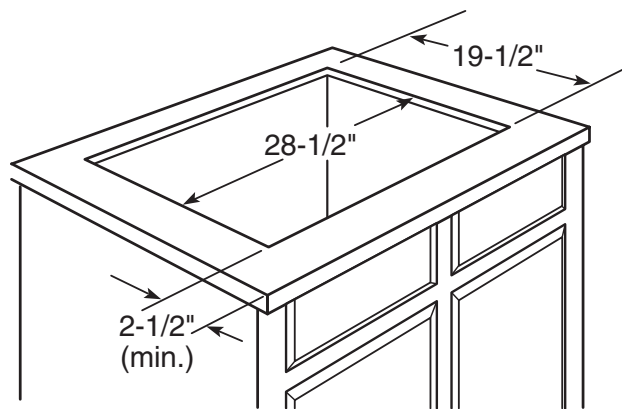
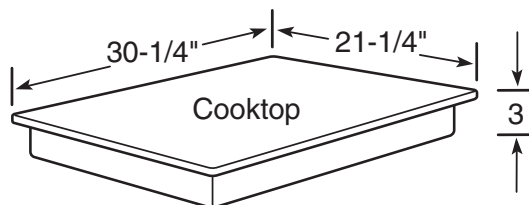
Cooktop models JP328WK/328BK/328SK are approved for use over GE 27" or 30" Single Wall Ovens. Refer to cooktop and wall oven installation instructions packed with product for current dimensional data.

This cooktop **cannot** be installed in countertops that cannot accept screws, such as granite or marble, etc.

If installed with a **GE Telescopic Downdraft System**: Consult both cooktop and downdraft installation instructions packed with product before installing. Cooktop gas/electric supply may need to be re-routed to install downdraft. The countertop must be at least 26" deep with a flat surface area of 23-1/2" or more, front to back. In addition, other clearances to the front edge of the countertop must be considered.

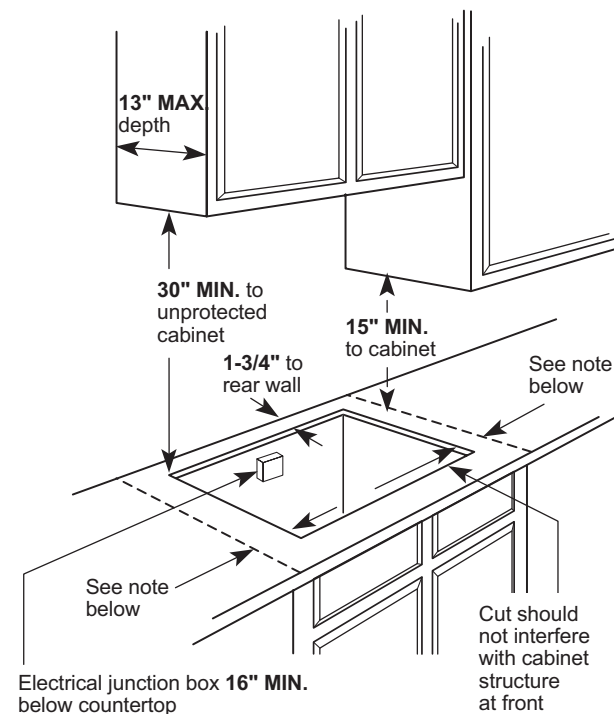
**FILLER TRIM KIT:** When replacing an old GE 30" cooktop (with larger opening) use the following one-piece trim kit to fill in the over-size hole. Available at additional cost. JXTR31W (White) JXTR31B (Black)

### APPROXIMATE COOKING DIMENSIONS

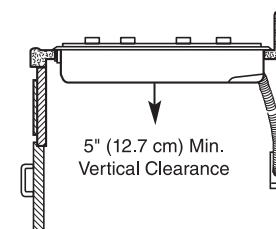


KW RATING	
240V	7.4
208V	5.6
AMPERAGE	
240V	40 Amps†
208V	30 Amps†

†**NOTE:** Check local codes for required breaker size.



**NOTE:** This cooktop has been approved for 0" spacing to adjacent surfaces above the cooktop. However, a 6" minimum spacing to surfaces less than 15" above the cooktop is recommended to reduce the exposure to steam, grease spatter and heat.



For answers to your Monogram, GE Café™ Series, GE Profile™ Series or GE Appliances product questions, visit our website at [geappliances.com](http://geappliances.com) or call GE Answer Center® Service, 800.626.2000.



Specification Revised 9/16

# JP328SK

## *GE 30" Built-In Electric Cooktop*

### **FEATURES AND BENEFITS**

Coil heating elements - Provides consistent and even heat on the cooktop with a plug-in element that is removable for easy cleaning

Lift-up cooktop with support rod - Makes spills and messes under the cooktop easily accessible and within your reach

Upfront controls - Controls are placed within easy reach at the front center of the cooktop

Heating element "On" light - Illuminates when the cooking surface is activated

Model JP328SKSS - Stainless steel

### **GUARANTEED FIT**

Replacing a similar cooktop from GE or another brand? GE cooktops are guaranteed for an exact fit to make replacement easy

Visit [geappliances.com](http://geappliances.com) for more info

